

# LPD3030

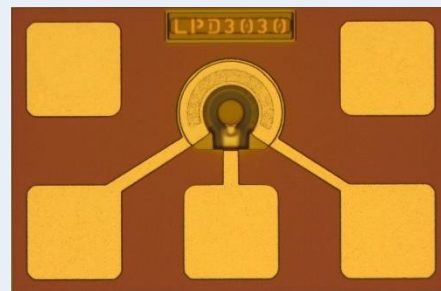
## InGaAs Photodiode

### FEATURES

- Flip chip ready
- 22 GHz bandwidth
- Telcordia Qualified

### APPLICATIONS

- 25G/50G/100G Ethernet
- Singlemode datacom and telecom
- Long Wavelength
- 1260nm – 1625nm
- Fiber-optic transceivers, receivers and transponders



Cosemi's LPD3030 is a mesa-structured, InGaAs- based PIN photodiode offering high responsivity, low dark current and low capacitance for high bandwidth, high performance optical receiver designs.

**Cosemi Technologies, Inc.**  
1370 Reynolds Ave., Suite 100  
Irvine, CA 92614  
Tel. 949.623.9816 | Fax. 949.623.9817  
Email: [info@cosemi.com](mailto:info@cosemi.com)  
Website: [www.cosemi.com](http://www.cosemi.com)

Copyright © 2015 Cosemi Technologies, Inc. All Rights Reserved.

Information contained in this document is proprietary and confidential to Cosemi. This document may not be reproduced, distributed or disclosed to any third-party without the express written consent of Cosemi. Product processing does not necessarily include testing of all parameters. Cosemi reserves the right to change the configuration and performance of the products or to discontinue products at any time.