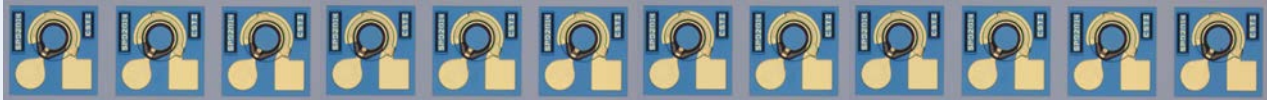


SPD2014-12X

GaAs PIN Photodiode 1x12 Array



FEATURES

- Large aperture
- Low operating voltage
- Low capacitance
- Telcordia Qualified

APPLICATIONS

- Multimode datacom and telecom
- 12x10Gb/s SR (120Gb)
- 12x14Gb/s (168Gb) Infiniband
- Fiberoptic transceivers, receivers and transponders
- Receive Optical Subassemblies (ROSA) for Active Optical Cables

Cosemi's SPD2014-12X is a mesa-structured, GaAs-based 1x12 PIN photodiode array offering high responsivity, low dark current and low capacitance for high bandwidth, high performance optical receiver designs for rates ranging from 12x10Gb/s up to 12x14Gb/s (168Gb). The aperture size is large enough to easily allow for designs using multimode fiber requiring a larger spot size. This same device is also available in various other size arrays from 1x1 to 1x12 (see SPD2014 and SPD2014-4X as examples).

Cosemi Technologies, Inc.
1370 Reynolds Ave., Suite 100
Irvine, CA 92614
Tel. 949.623.9816 | Fax. 949.623.9817
Email: info@cosemi.com
Website: www.cosemi.com

Copyright © 2015 Cosemi Technologies, Inc. All Rights Reserved.

Information contained in this document is proprietary and confidential to Cosemi. This document may not be reproduced, distributed or disclosed to any third-party without the express written consent of Cosemi. Product processing does not necessarily include testing of all parameters. Cosemi reserves the right to change the configuration and performance of the products or to discontinue products at any time.

Proprietary and Confidential Information

Rev 1.1-151203

Information contained in this document is proprietary and confidential to Cosemi. Accordingly, any reproduction, distribution or disclosure of such information without the express written consent of Cosemi is strictly prohibited.