

LPD2006

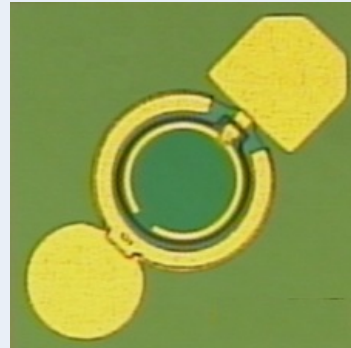
InGaAs PIN Photodiode

FEATURES

- Large aperture
- Low operating voltage
- Low capacitance
- Telcordia Qualified

APPLICATIONS

- Singlemode datacom and telecom
- GPON
- Up to 6Gb/s
- Fiberoptic transceivers, receivers and transponders
- Receive Optical Subassemblies (ROSA)



Cosemi's LPD2006 is a mesa-structured, InGaAs-based PIN photodiode offering high responsivity, low dark current and low capacitance for high bandwidth, high performance optical receiver designs. The large, opposed pads allow for convenient automated wirebonding.

Cosemi Technologies, Inc.
1370 Reynolds Ave., Suite 100
Irvine, CA 92614
Tel. 949.623.9816 | Fax. 949.623.9817
Email: info@cosemi.com
Website: www.cosemi.com

Copyright © 2015 Cosemi Technologies, Inc. All Rights Reserved.

Information contained in this document is proprietary and confidential to Cosemi. This document may not be reproduced, distributed or disclosed to any third-party without the express written consent of Cosemi. Product processing does not necessarily include testing of all parameters. Cosemi reserves the right to change the configuration and performance of the products or to discontinue products at any time.